



WEEKLY COMMENTS

david@mnwestag.com

Office 1-877-365-3744

www.mnwestag.com

Friday May 12, 2013

Position Management: The table shows how the Sample Farm is positioned at this time. Individual recommendations may vary.

	2012 Crop	2013 Crop
Corn	90% sold	25% - 30% sold HTA 40% covered with put options
Soybeans	100% sold 100 % sold as of last week. Catch up is Advised	40% sold HTA 40% covered with put options

Strategy & Price Targets:

2012 Corn currently 90% Sold. Prior comments indicated that we recommended that you consider adding another 20% sale if May futures reach the \$7.25 to get to 90% sold on the 2012 Corn Crop. May futures reached and exceeded \$7.25 for 8 days between March 19 and March 28. The open orders were filled March 19th to bring us to 90% sold with a May 13 corn futures price of \$7.25 with a +.10 basis many locations will be near \$7.35 cash. **Stay tuned for final sale recommendation.**

2012 Soybean 100% Sold. Prior comments indicated that we may wish to be sold out near \$15.45 futures. Recent high was \$15.16 1/2 on Friday Feb 22nd. Last week we recommended that you sell all of your remaining 2012 crop with cash values in Mankato at \$14.60 to \$14.70. This would be based on a basis of +.85 July futures in Mankato. If your local basis is less, then your target cash price would be lower also. Example, local basis at +.40 = \$14.20 - \$14.30 cash price.

2013 Corn currently 25-30% sold and 40% protected with put options. Prior comments indicated that we recommended that you consider adding to sales to get to 40% sold at \$6.18 Dec13 futures if a rally provides the opportunity. In addition, we said we would like to cover 40% with Dec13 put options if we can get them bought to provide a \$5.50 Futures floor for \$0.50 in premium costs and have not been able to do so. The most recent low premium for \$6.00 puts was \$.55 on Monday Feb 4th and as of today, Fri April 19th the options are quoted at \$.95. We recommended a put / call window buying a \$5.80 Dec put and selling a \$6.10 Dec call for around \$ 0.52 or so on 40% of the crop this would provide a \$5.30 futures floor at a time when the market is about \$5.35 and still provide some upside and this was an achieved fill.

2013 Soybeans now 40% sold and 40% protected with put options. Prior comments indicated that should Nov13 soybeans reach \$13.30 to \$13.40 we may wish to push up sales to get to 40% sold. The \$13.30 objective was met Wednesday Jan 30th with the high at \$13.37 and would take you to 40% sold. In addition we recommended that we would like to cover 40% with Nov13 put options if we could get them bought to provide a \$12.50 Futures floor for \$0.90 in premium costs. The Nov 13 soybean \$ 13.40 puts options traded at \$0.89 7/8 Tuesday Feb 5th filling all the open orders that were in place that afternoon. As of today, Fri April 26th the options are quoted at \$1.60.

Next Major USDA Reports: Weekly Monday Crop Progress Reports Cattle on Feed Friday May 17, 2013
USDA WASDE Report Wednesday June 12, 2013 Planted Acreage & Quarterly Grain Stock Friday June 28, 2013

Friday CBOT Futures Closes

CORN					SOYBEANS					CHICAGO WHEAT				
Mth	High	Low	Last	Change	Mth	High	Low	Last	Change	Mth	High	Low	Last	Change
MAY	687-6	686-4	687-6s	-6-6	MAY	1491-2	1488-2	1488-2s	-3-0	MAY	716-2	696-6	696-6s	-19-4
JUL	645-4	626-0	636-2s	-12-4	JUL	1418-0	1394-0	1399-0s	-9-6	JUL	716-4	704-0	704-2s	-19-2
SEP	562-6	548-4	554-4s	-11-4	AUG	1340-0	1330-0	1330-0s	-10-0	SEP	717-6	710-4	712-4s	-19-0
DEC	537-0	527-6	529-4s	-12-0	SEP	1264-2	1254-2	1254-2s	-10-0	DEC	737-0	730-0	730-0s	-18-2
MAR	545-4	540-0	540-0s	-11-4	NOV	1219-0	1205-0	1205-4s	-13-4	MAR	763-4	747-0	747-0s	-16-4
MAY	559-0	547-6	547-6s	-11-2	JAN	1214-0	1212-6	1212-6s	-13-4	MAY	770-2	753-0	753-0s	-17-2
JUL	565-6	554-6	554-6s	-11-0	MAR	1232-2	1219-0	1219-0s	-13-2	MINN WHEAT				
SEP	549-4	539-2	539-2s	-10-2	MAY	1236-0	1223-6	1223-6s	-12-2	MAY	857-6	857-6	857-6s	0-0
DEC	539-6	538-6	539-6s	-9-4	JUL	1244-2	1231-4	1231-4s	-12-6	JUL	807-2	805-0	807-2	-1-4
					AUG	1239-6	1227-0	1227-0s	-12-6	SEP	802-6	800-4	802-6	-2-0
										DEC	810-2	810-0	810-0	-2-2
										MAR	835-4	822-6	823-2s	-17-0

Iowa State 2013 Custom Rate Guide

<http://www.extension.iastate.edu/publications/FM1698.pdf>

(an equal opportunity provider) The information contained herein was obtained from sources believed to be reliable, but can not be guaranteed. All examples given are strictly hypothetical and neither the information, nor any opinion expressed, constitutes a solicitation to market commodities or buy or sell futures or options on futures. Commodity marketing and trading is risky. Trading and/or marketing decisions and any trading and/or marketing gains or losses are the responsibility of the commodity owner, producer, and/or account holder. Minnesota West Ag Services LLC and principals and employees assume no liability for any use of any information contained herein. Reproduction without authorization is forbidden.



WEEKLY COMMENTS

david@mnwestag.com

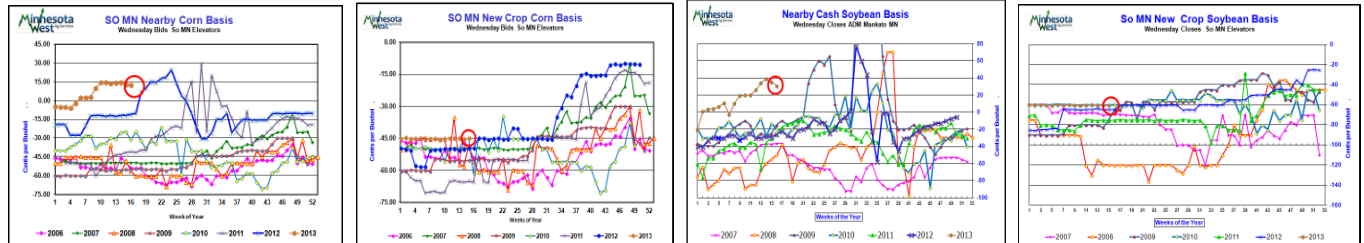
Office 1-877-365-3744

www.mnwestag.com

Friday May 12, 2013

Basis: Nearby Corn basis steady with some country elevators and end users +.32 to +.10 the July Futures. Other country elevators with corn basis wider at -.07 to -.15 the May futures.

Nearby Soybean basis continues to remain firm as processors are +.70 with the May Futures. Some elevators with Soybean basis steady at -.10 to -.20 the May futures.



USDA WASDE Report

Old crop carry out estimates are in line with the average trade estimates. Corn 759 million bushels, Soybeans 125 million bushels and wheat of 731 million bushels

US Carry Out	2012-13	USDA Grain Carry Out Estimates (billions/bu)			US Carry Out	2013-14	USDA Grain Carry Out Estimates (billions/bu)		
May 10 2013 Report	USDA May 12/13	Average Trade Est.	Range of Trade Est.	USDA Apr 12/13	May 10 2013 Report	USDA May 13/14	Average Trade Est.	Range of Trade Est.	USDA Apr 13/14
Corn	0.759	0.749	0.684-0.800	0.757	Corn	2.004	1.993	1.387-2.427	NA
Soybeans	0.125	0.123	0.107-0.130	0.125	Soybeans	0.265	0.236	0.147-0.325	NA
Wheat	0.731	0.733	0.720-0.747	0.731	Wheat	0.670	0.658	0.486-0.800	NA

2013/14 Crop Carry out estimates slight more than the average trade estimates. Corn of 2.004 billion bushels, soybean 265 million bushels and wheat of 670 million bushels. USDA uses a national corn yield of 158.0 bu/a down from 163.6 in the February Outlook and soybeans at 44.5 bu/acre same as the February Outlook

2012/13 USDA World Grain Carryout (in million tonnes) & Trade Estimates					2013/14 USDA World Grain Carryout (in million tonnes) & Trade Estimates				
May 10 2013 Report	USDA May 12/13	Average Trade Est.	Range of Trade Est.	USDA Apr 13/14	May 10 2013 Report	USDA May 13/14	Average Trade Est.	Range of Trade Est.	USDA Apr 13/14
Corn	125.43	125.900	122.0-132.1	125.290	Corn	154.63	150.900	130.0-168.3	NA
Soybeans	62.46	62.400	60.0-65.0	62.630	Soybeans	74.96	67.900	62.6-83.0	NA
Wheat	180.17	182.300	178.3-185.0	182.260	Wheat	186.38	186.500	175.0-195.8	NA

2012/13 World carry out for corn slightly below trade estimates by .47 mmt, 2012/13 World carry out for Soybeans only 0.06 mmt above trade. The 2013/14 World corn carry out slightly below trade estimate by .27 mmt while the 2013/14 World Soybean carry out well above trade estimate by 7.06 mmt.

Market Talk Prices immediately after USDA release the report was mostly unchanged from the prerelease price level, indicating that the report was viewed as neutral or discounted. Trade is now focused on planting progress and weather. Some think that the 158 corn yield may be the highest of the year and also that perhaps as much as 1 million acres of planned corn acres doesn't get planted. Trade thinks that corn planting progress on Monday's report may be only about 30-35%, well below historical planting pace.

The trade will still be sorting through USDA's supply and demand report during today's session with attention on global numbers, mainly South American corn production. While U.S.D.A. left Brazil's corn production unchanged, private analysts have increased potential crop size by 4 million metric tons. This could greatly impact balance sheets as the marketing year progresses.

Confirmed reports that 3 cargo ships of South American soybeans from Brazil and Paraguay are headed the South East coast of the United States. It is believed that the net cost may be near \$1.00 per bushels lower than U.S. soybeans.

The trade is watching the Chinese economy for clues of the impacts of bird flu, inflation, trade balance and monetary policy. It appears that while consumer prices are higher due mainly to higher vegetable prices, the economy has not suffered any major hiccups.

(an equal opportunity provider) The information contained herein was obtained from sources believed to be reliable, but can not be guaranteed. All examples given are strictly hypothetical and neither the information, nor any opinion expressed, constitutes a solicitation to market commodities or buy or sell futures or options on futures. Commodity marketing and trading is risky. Trading and/or marketing decisions and any trading and/or marketing gains or losses are the responsibility of the commodity owner, producer, and/or account holder. Minnesota West Ag Services LLC and principals and employees assume no liability for any use of any information contained herein. Reproduction without authorization is forbidden.



WEEKLY COMMENTS

david@mnwestag.com

Office 1-877-365-3744

www.mnwestag.com

Friday May 12, 2013

Crop Progress Report Data provided by USDA/NASS Week Ending May 05, 2013

Corn Percent Planted				
	Prev Year	Prev Week	May 5 2013	5-Yr Avg
CO	53	4	12	40
IL	88	1	7	48
IN	82	1	8	41
IA	62	2	8	56
KS	72	7	17	54
KY	91	24	32	57
MI	43	0	5	33
MN	69	0	2	51
MO	83	15	22	53
NE	70	3	14	53
NC	93	78	89	92
ND	52	0	1	25
OH	76	2	7	39
PA	32	11	28	29
SD	53	0	7	26
TN	97	47	56	75
TX	74	69	70	77
WI	32	0	4	26
18 Sts	69	5	12	47
These 18 States planted 92% of last year's corn acreage.				

Corn Percent Emerged				
	Prev Year	Prev Week	May 5 2013	5-Yr Avg
CO	10	0	0	4
IL	60	0	0	23
IN	46	0	0	18
IA	20	0	0	12
KS	40	1	2	21
KY	73	5	12	37
MI	7	0	0	4
MN	10	0	0	7
MO	57	9	12	29
NE	22	0	0	8
NC	80	48	70	67
ND	4	0	0	2
OH	19	0	0	9
PA	4	0	1	5
SD	9	0	0	3
TN	90	17	30	48
TX	60	60	61	63
WI	0	0	0	2
18 Sts	29	2	3	15
These 18 States planted 92% of last year's corn acreage.				

Soybeans Percent Planted				
	Prev Year	Prev Week	May 5 2013	5-Yr Avg
AR	55	NA	14	31
IL	20	NA	0	8
IN	45	NA	0	16
IA	6	NA	0	10
KS	17	NA	0	7
KY	31	NA	1	9
LA	59	NA	39	54
MI	15	NA	0	11
MN	17	NA	0	12
MS	72	NA	15	60
MO	15	NA	0	7
NE	26	NA	1	13
NC	10	NA	2	9
ND	10	NA	0	3
OH	32	NA	1	15
SD	8	NA	0	3
TN	21	NA	1	8
WI	4	NA	0	5
18 Sts	22	NA	2	12
These 18 States planted 95% of last year's soybean acreage.				

Winter Wheat Percent Headed				
	Prev Year	Prev Week	May 5 2013	5-Yr Avg
AR	100	34	77	91
CA	96	85	95	97
CO	22	0	0	9
ID	0	0	0	0
IL	86	0	0	29
IN	55	0	1	15
KS	89	1	3	32
MI	0	0	0	0
MO	93	2	13	40
MT	0	0	0	0
NE	22	0	0	4
NC	100	45	73	88
OH	5	0	0	2
OK	98	21	42	83
OR	1	0	2	1
SD	3	0	0	1
TX	89	45	53	71
WA	0	0	0	0
18 Sts	64	14	20	39
These 18 States planted 87% of last year's winter wheat acreage.				

Winter Wheat Condition by Percent					
	VP	P	F	G	EX
AR	5	3	30	51	11
CA	0	0	5	25	70
CO	27	29	31	12	1
ID	1	1	17	71	10
IL	1	6	25	57	11
IN	0	3	26	51	20
KS	19	21	33	24	3
MI	4	6	29	50	11
MO	1	4	32	53	10
MT	3	9	32	50	6
NE	16	33	39	12	0
NC	0	4	25	59	12
OH	0	3	23	60	14
OK	18	27	35	18	2
OR	4	9	46	38	3
SD	31	31	32	6	0
TX	46	28	19	6	1
WA	1	3	15	70	11
18 Sts	19	20	29	27	5
Prev Wk	16	19	32	28	5
Prev Yr	4	8	25	48	15

Sorghum Percent Planted				
	Prev Year	Prev Week	May 5 2013	5-Yr Avg
AR	96	37	49	69
CO	10	0	0	5
IL	38	0	0	10
KS	4	0	0	2
LA	92	77	80	85
MO	25	2	2	10
NE	6	0	0	4
NM	8	2	2	8
OK	19	4	6	14
SD	2	0	0	1
TX	69	64	65	67
11 Sts	34	27	28	31
These 11 States planted 98% of last year's sorghum acreage.				

Cotton Percent Planted				
	Prev Year	Prev Week	May 5 2013	5-Yr Avg
AL	46	15	26	32
AZ	74	65	85	68
AR	73	2	5	35
CA	81	80	90	87
GA	26	10	17	20
KS	9	0	0	2
LA	79	6	15	68
MS	64	0	2	35
MO	47	1	2	24
NC	28	11	12	28
OK	11	0	2	8
SC	25	10	14	22
TN	26	0	1	10
TX	27	14	16	24
VA	24	0	1	27
15 Sts	35	14	17	27
These 15 States planted 99% of last year's cotton acreage.				

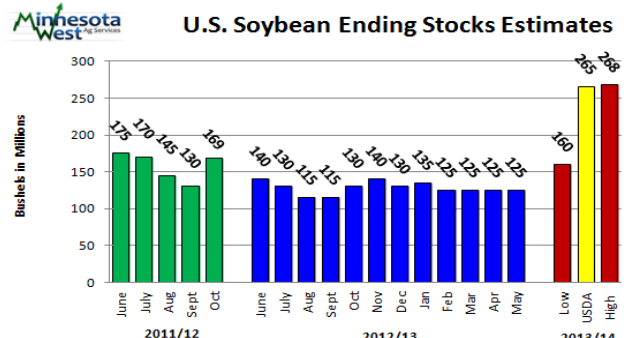
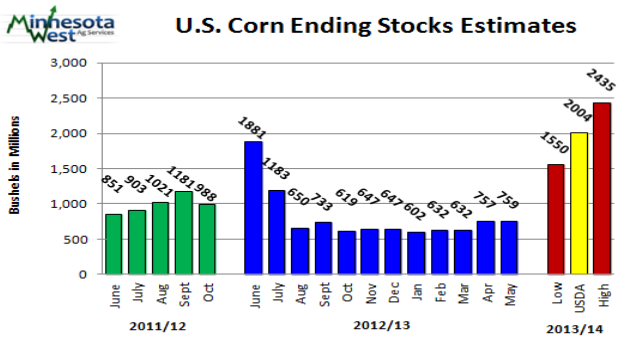
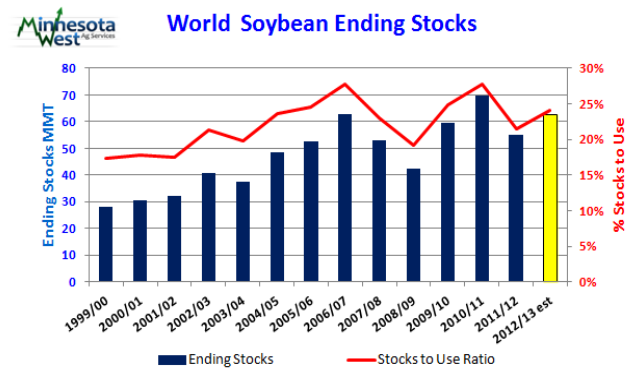
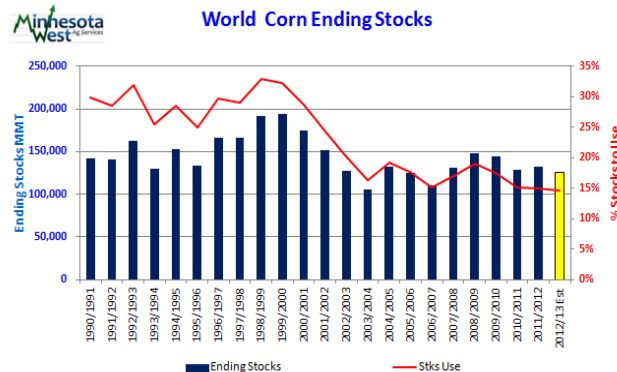
Spring Wheat Percent Planted				
	Prev Year	Prev Week	May 5 2013	5-Yr Avg
ID	89	71	82	73
MN	98	0	2	50
MT	71	12	33	50
ND	80	2	7	40
SD	100	13	46	74
WA	78	85	94	79
6 Sts	82	12	23	50
These 6 States planted 99% of last year's spring wheat acreage.				

Spring Wheat Percent Emerged				
	Prev Year	Prev Week	May 5 2013	5-Yr Avg
ID	49	27	43	37
MN	61	0	0	29
MT	25	0	1	11
ND	39	0	0	13
SD	88	1	5	39
WA	45	52	67	50
6 Sts	43	3	5	19
These 6 States planted 99% of last year's spring wheat acreage.				

Sugarbeets Percent Planted				
	Prev Year	Prev Week	May 5 2013	5-Yr Avg
ID	99	92	98	93
MI	100	7	31	83
MN	97	0	4	54
ND	95	0	0	52
4 Sts	97	17	24	65
These 4 States planted 84% of last year's sugarbeet acreage.				

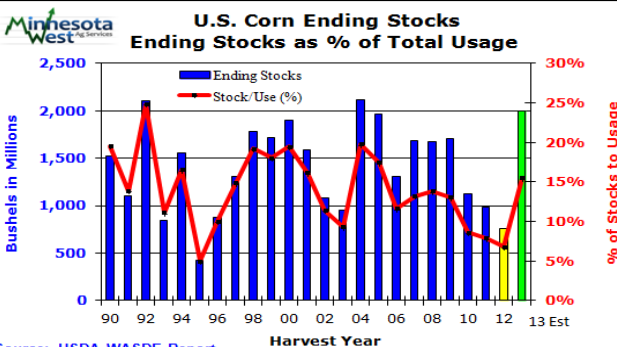
Oats Percent Planted				
	Prev Year	Prev Week	May 5 2013	5-Yr Avg
IA	100	45	67	88
MN	96	1	9	64
NE	96	70	84	93
ND	71	1	9	35
OH	100	52	67	75
PA	96	64	89	76
SD	93	30	51	68
TX	100	100	100	100
WI	85	5	18	62
9 Sts	93	47	57	76

(an equal opportunity provider) The information contained herein was obtained from sources believed to be reliable, but can not be guaranteed. All examples given are strictly hypothetical and neither the information, nor any opinion expressed, constitutes a solicitation to market commodities or buy or sell futures or options on futures. Commodity marketing and trading is risky. Trading and/or marketing decisions and any trading and/or marketing gains or losses are the responsibility of the commodity owner, producer, and/or account holder. Minnesota West Ag Services LLC and principals and employees assume no liability for any use of any information contained herein. Reproduction without authorization is forbidden.

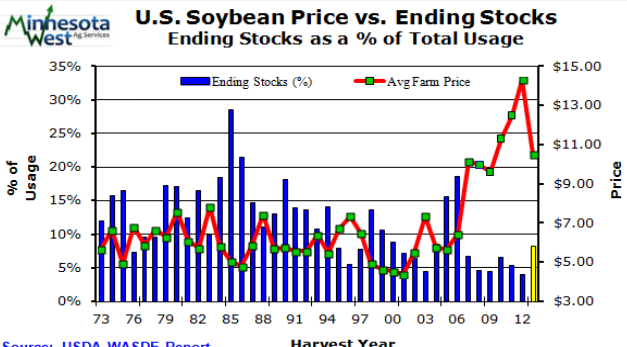


Source: USDA WASDE Report

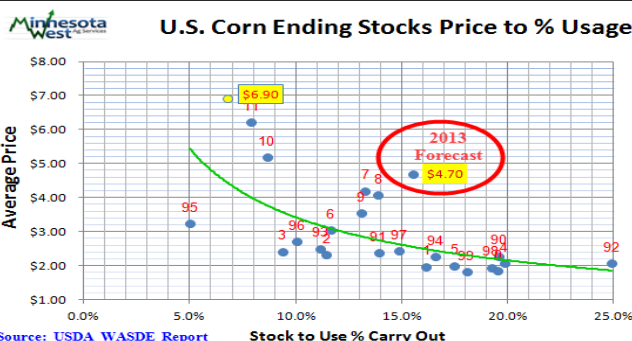
Source: USDA WASDE Report



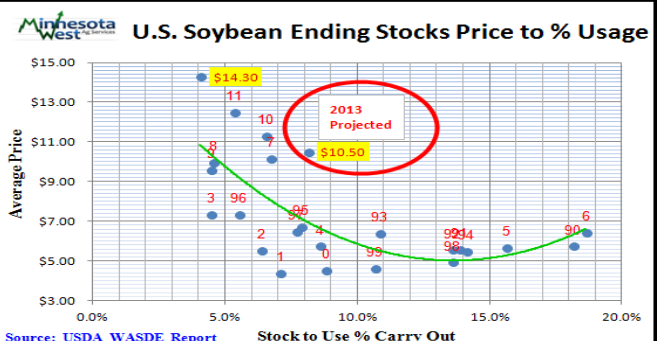
Source: USDA WASDE Report



Source: USDA WASDE Report



Source: USDA WASDE Report



Source: USDA WASDE Report

(an equal opportunity provider) The information contained herein was obtained from sources believed to be reliable, but can not be guaranteed. All examples given are strictly hypothetical and neither the information, nor any opinion expressed, constitutes a solicitation to market commodities or buy or sell futures or options on futures. Commodity marketing and trading is risky. Trading and/or marketing decisions and any trading and/or marketing gains or losses are the responsibility of the commodity owner, producer, and/or account holder. Minnesota West Ag Services LLC and principals and employees assume no liability for any use of any information contained herein. Reproduction without authorization is forbidden.



WEEKLY COMMENTS

david@mnwestag.com

Office 1-877-365-3744

www.mnwestag.com

Friday May 12, 2013

U.S. Corn Supply / Demand (mb)							May	Last Mo	May	Outlook
	USDA	USDA	USDA	USDA	USDA	USDA	USDA	Apr	USDA	USDA
	06/07	07/08	08/09	09/10	10/11	11/12	12/13	12/13	13/14	13/14
Planted	78.3	93.6	86.0	86.5	88.2	91.93	97.200	97.200	97.300	96.500
Harvested	70.6	86.5	78.6	79.6	81.44	83.95	87.359	87.359	89.50	88.81
% Harvested	90.2%	92.4%	91.4%	92.0%	92.17%	91.33%	89.88%	89.88%	91.98%	92.03%
Yield	149.1	151.1	153.9	164.7	152.8	147.2	123.40	123.40	158.0	163.6
Carryin	1,967	1,304	1,624	1,673	1,708	1,128	989	989	759	759
Production	10,535	13,074	12,092	13,110	12,447	12,360	10,780	10,780	14,140	14,530
Imports	13	18	13	9	27	29	125	125	25	25
Supply	12,515	14,396	13,729	14,792	14,182	13,517	11,894	11,894	14,924	15,314
Feed	5,598	6,002	5,246	5,159	4,792	4,548	4,400	4,400	5,325	5,400
Seed, Food, Ind	3,488	4,345	4,953	5,938	6,427	6,437	5,985	5,937	6,295	6,110
Ethanol Use	2,117	3,000	3,677	4,568	5,021	5,011	4,600	4,550	4,850	4,675
Exports	2,125	2,425	1,858	1,987	1,835	1,543	750	825	1,300	1,500
Demand	11,211	12,772	12,056	13,084	13,054	12,528	11,135	11,137	12,920	13,010
Carryout	1,304	1,624	1,673	1,708	1,128	989	759	757	2,004	2,304
CO/Use	11.6%	12.7%	13.9%	13.1%	8.6%	7.9%	6.8%	6.8%	15.5%	17.7%
CO/Days Use	42	46	51	48	32	29	25	25	57	65
Price range	\$ 3.04	\$ 4.20	\$ 4.06	\$ 3.55	\$ 5.18	\$ 6.22	\$ 6.70	\$ 6.75	\$ 4.30	
							\$ 7.10	\$ 7.65	\$ 5.10	

USDA uses a national corn yield of 158.0 bu/a down from 163.6 in the February Outlook and soybeans at 44.5 bu/acre same as the February Outlook

U.S. Soybean Supply / Demand (mb)							May	Last Mo	May	Outlook
	USDA	USDA	USDA	USDA	USDA	USDA	USDA	Apr	USDA	USDA
	06/07	07/08	08/09	09/10	10/11	11/12	12/13	12/13	13/14	13/14
Planted	75.5	64.7	75.7	77.5	77.7	75.0	77.200	77.200	77.198	77.500
Harvested	74.6	62.8	74.6	76.3	76.6	73.84	76.142	76.142	76.19	76.51
% Harvested	98.8%	97.1%	98.6%	98.5%	98.80%	98.45%	98.63%	98.63%	98.69%	98.72%
Yield	42.7	41.7	39.7	44.0	43.5	41.9	39.60	39.60	44.5	44.5
Carryin	449	574	205	138	151	215	169	169	125	125
Production	3,187	2,676	2,967	3,359	3,329	3,094	3,015	3,015	3,390	3,405
Imports	10	10	13	15	15	16	20	20	15	15
Supply	3,646	3,260	3,185	3,512	3,495	3,325	3,204	3,204	3,530	3,545
Crush	1,806	1,802	1,662	1,752	1,648	1,703	1,635	1,635	1,695	1,660
Exports	1,118	1,150	1,283	1,498	1,501	1,360	1,350	1,350	1,450	1,500
Seed	78	94	95	90	87	90	90	89	87	87
Residual	70	9	6	21	44	3	4	30	33	48
Demand	3,072	3,055	3,047	3,361	3,280	3,156	3,079	3,079	3,265	3,295
Carryout	574	205	138	151	215	169	125	125	265	250
CO/Use	18.7%	6.7%	4.5%	4.5%	6.6%	5.3%	4.1%	4.1%	8.1%	7.6%
CO/Days Use	68	25	17	16	24	20	15	15	30	28
Price range	\$ 6.43	\$ 10.15	\$ 9.97	\$ 9.59	\$ 11.30	\$ 12.50	\$ 14.30	\$ 13.80	\$ 9.50	
							\$ 14.80	\$ 11.50		

(an equal opportunity provider) The information contained herein was obtained from sources believed to be reliable, but can not be guaranteed. All examples given are strictly hypothetical and neither the information, nor any opinion expressed, constitutes a solicitation to market commodities or buy or sell futures or options on futures. Commodity marketing and trading is risky. Trading and/or marketing decisions and any trading and/or marketing gains or losses are the responsibility of the commodity owner, producer, and/or account holder. Minnesota West Ag Services LLC and principals and employees assume no liability for any use of any information contained herein. Reproduction without authorization is forbidden.



WEEKLY COMMENTS

david@mnwestag.com

Office 1-877-365-3744

www.mnwestag.com

Friday May 12, 2013

July 13 Corn Daily



December 2013 Corn Daily



July 13 Soybean Daily



November 2013 Soybean Daily



Nearby cash is priced off the July Soybean Futures but a **positive basis** reflects **CURRENT** cash values that are only about 40 cents off the high since Jan 1st.

Weekly Corn



Weekly Soybean



(an equal opportunity provider) The information contained herein was obtained from sources believed to be reliable, but can not be guaranteed. All examples given are strictly hypothetical and neither the information, nor any opinion expressed, constitutes a solicitation to market commodities or buy or sell futures or options on futures. Commodity marketing and trading is risky. Trading and/or marketing decisions and any trading and/or marketing gains or losses are the responsibility of the commodity owner, producer, and/or account holder. Minnesota West Ag Services LLC and principals and employees assume no liability for any use of any information contained herein. Reproduction without authorization is forbidden.



WEEKLY COMMENTS

david@mnwestag.com

Office 1-877-365-3744

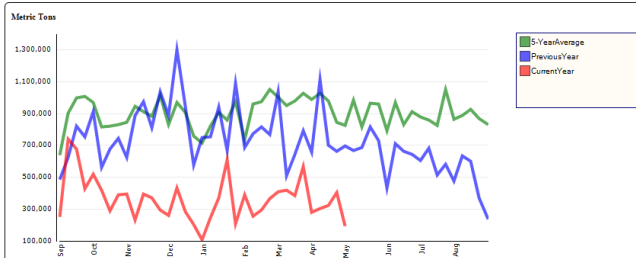
www.mnwestag.com

Friday May 12, 2013

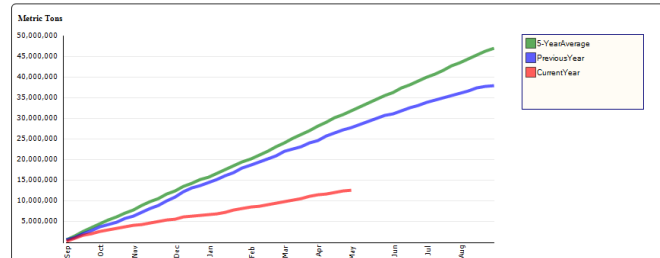
US Corn Exports 2012-13 for the period April 26 – May 2, 2013 from USDA FAS

Net sales of 115,800 MT for 2012/2013 were down 65 percent from the previous week and 62 percent from the prior 4-week average. Increases reported for Japan (89,900 MT, including 31,000 MT switched from unknown destinations), Venezuela (73,000 MT, including 27,500 MT switched from unknown destinations), Mexico (22,900 MT), Costa Rica (9,100 MT, including 7,800 MT switched from unknown destinations), Canada (3,800 MT), and Honduras (2,500 MT), were partially offset by decreases for Colombia (60,000 MT) and unknown destinations (26,400 MT). Net sales of 169,900 MT for 2013/2014 were for China (75,000 MT), Saudi Arabia (62,000 MT), Japan (24,700 MT), and Jamaica (8,300 MT). Exports of 192,100 MT were down 52 percent from the previous week and 41 percent from the prior 4-week average. The primary destinations were Mexico (83,200 MT), Japan (54,100 MT), Venezuela (30,000 MT), Costa Rica (9,100 MT), and Taiwan (7,700 MT).

Weekly



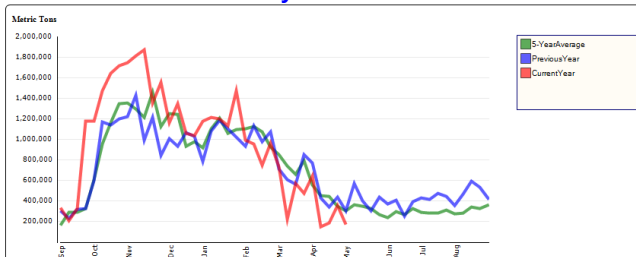
Accumulated



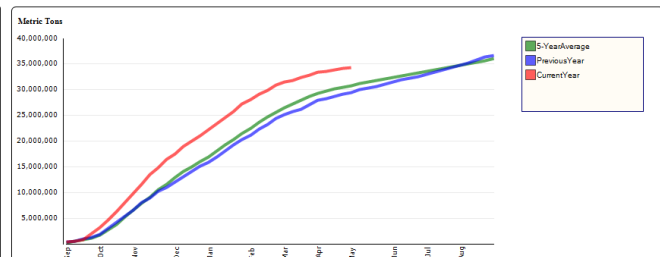
US Soybean Exports 2012-13 for the period April 26 – May 2, 2013 from USDA FAS

Net sales of 193,800 MT for 2012/2013 resulted as increases for Mexico (84,400 MT), Indonesia (50,200 MT), Japan (26,300 MT), Malaysia (24,000 MT, switched from unknown destinations), and China (6,100 MT), were partially offset by decreases for unknown destinations (15,000 MT). Net sales of 391,700 MT for 2013/2014 were primarily for China (360,000 MT) and unknown destinations (20,000 MT). Exports of 171,800 MT were down 52 percent from the previous week and 49 percent from the prior 4-week average. The primary destinations were China (66,600 MT), Japan (31,300 MT), Malaysia (24,200 MT), Indonesia (15,100 MT), Taiwan (12,400 MT), and Mexico (10,800 MT).

Weekly



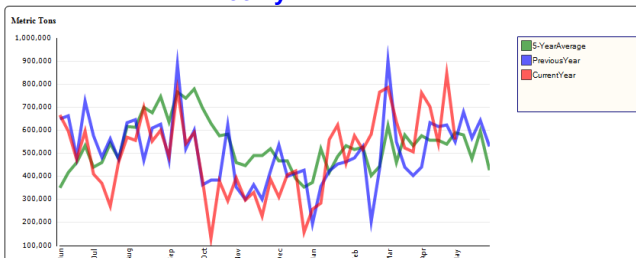
Accumulated



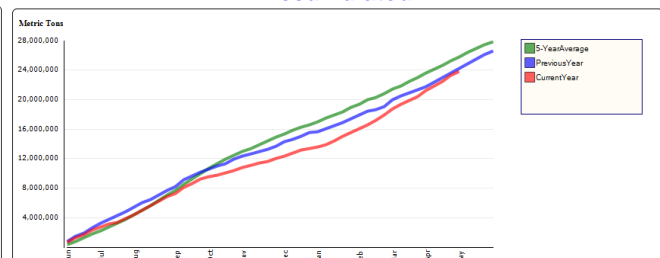
US Wheat Exports 2012-13 for the period April 26 – May 2, 2013 from USDA FAS

Net sales of 239,200 MT for delivery in the 2012/2013 marketing year were up 9 percent from the previous week, but down 13 percent from the prior 4-week average. Increases reported for Chile (74,400 MT), Indonesia (65,700 MT, including 60,000 MT switched from unknown destinations), Mexico (63,000 MT), the Philippines (45,000 MT), Namibia (27,500 MT, including 25,000 MT switched from Haiti), and Costa Rica (15,200 MT, including 14,000 MT switched from unknown destinations), were partially offset by decreases for unknown destinations (48,500 MT), Haiti (25,000 MT) and Brazil (4,500 MT). Net sales of 226,300 MT for delivery in the 2013/2014 marketing year were primarily for unknown destinations (69,000 MT), Brazil (55,000 MT), Mexico (32,000 MT), and Japan (22,400 MT). Decreases were reported for Vietnam (1,000 MT). Exports of 559,700 MT were down 34 percent from the previous week and 22 percent from the prior 4-week average. The primary destinations were Chile (72,400 MT), Mexico (70,100 MT), Indonesia (65,700 MT), Japan (63,400 MT), Thailand (51,300 MT), and Algeria (42,200 MT).

Weekly



Accumulated



(an equal opportunity provider) The information contained herein was obtained from sources believed to be reliable, but can not be guaranteed. All examples given are strictly hypothetical and neither the information, nor any opinion expressed, constitutes a solicitation to market commodities or buy or sell futures or options on futures. Commodity marketing and trading is risky. Trading and/or marketing decisions and any trading and/or marketing gains or losses are the responsibility of the commodity owner, producer, and/or account holder. Minnesota West Ag Services LLC and principals and employees assume no liability for any use of any information contained herein. Reproduction without authorization is forbidden.



WEEKLY COMMENTS

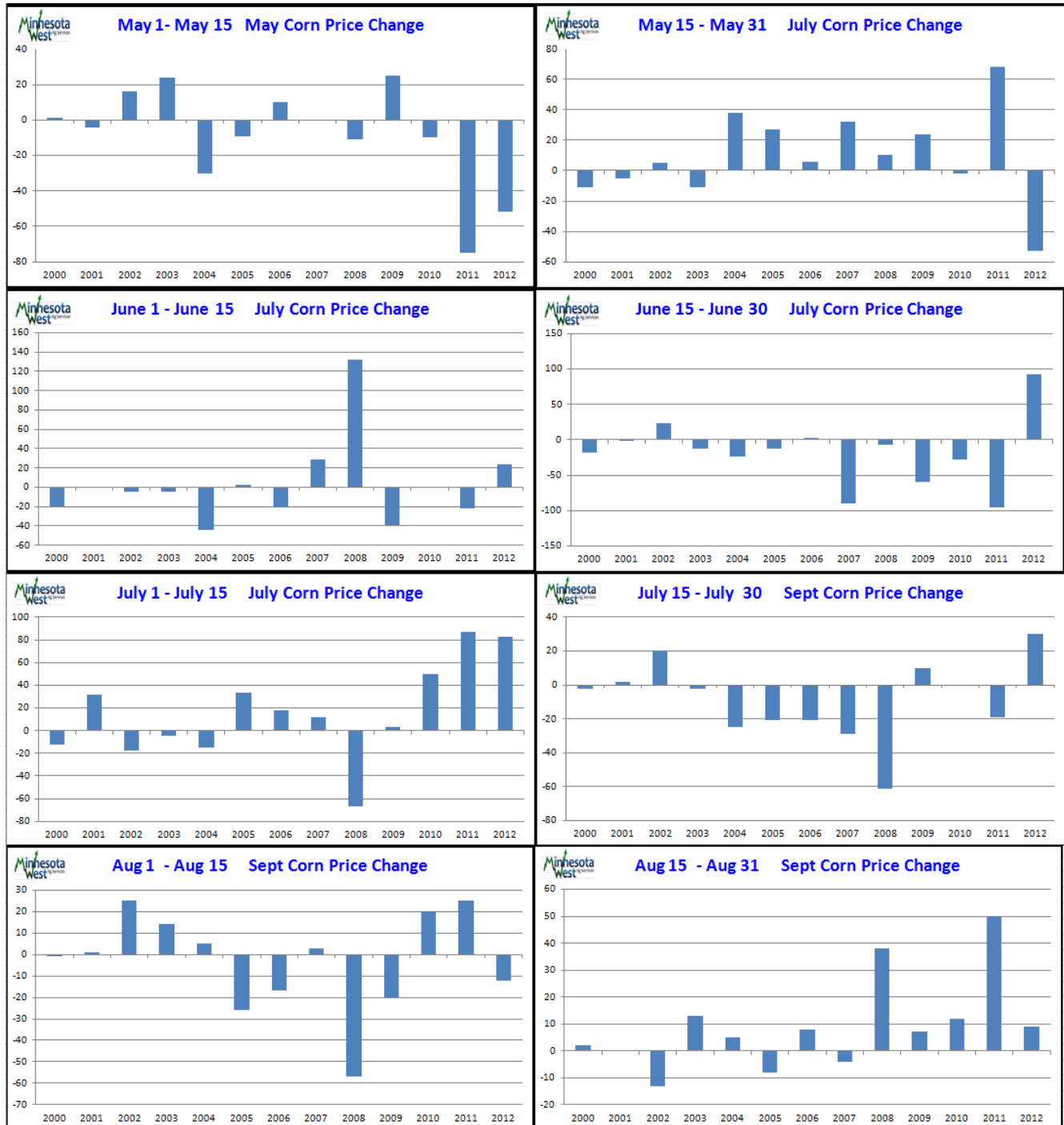
david@mnwestag.com

Office 1-877-365-3744

www.mnwestag.com

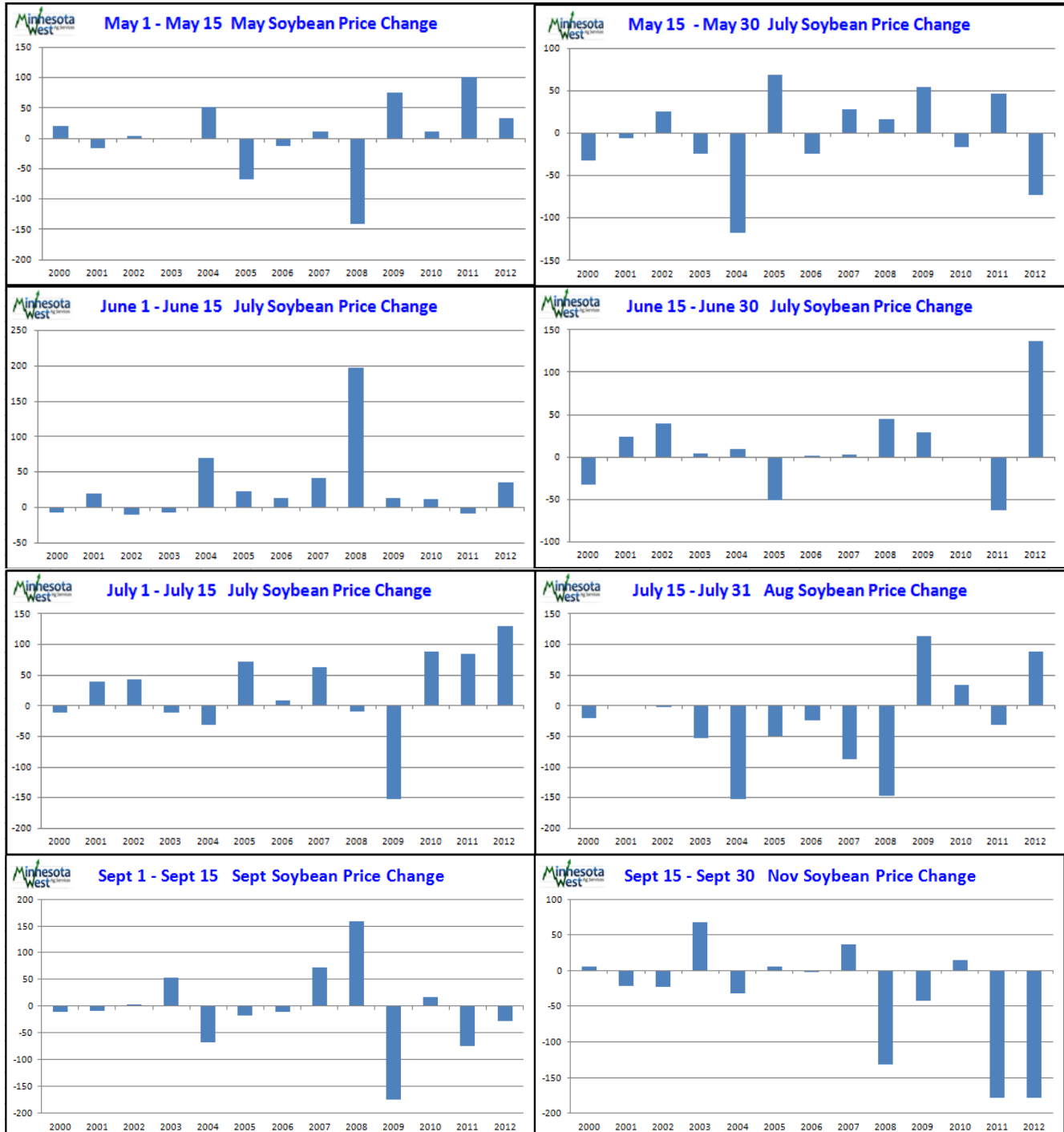
Friday May 12, 2013

Bi-Weekly Corn Seasonal Price Charts:



(an equal opportunity provider) The information contained herein was obtained from sources believed to be reliable, but can not be guaranteed. All examples given are strictly hypothetical and neither the information, nor any opinion expressed, constitutes a solicitation to market commodities or buy or sell futures or options on futures. Commodity marketing and trading is risky. Trading and/or marketing decisions and any trading and/or marketing gains or losses are the responsibility of the commodity owner, producer, and/or account holder. Minnesota West Ag Services LLC and principals and employees assume no liability for any use of any information contained herein. Reproduction without authorization is forbidden.

Bi-Weekly Soybean Seasonal Price Charts:



(an equal opportunity provider) The information contained herein was obtained from sources believed to be reliable, but can not be guaranteed. All examples given are strictly hypothetical and neither the information, nor any opinion expressed, constitutes a solicitation to market commodities or buy or sell futures or options on futures. Commodity marketing and trading is risky. Trading and/or marketing decisions and any trading and/or marketing gains or losses are the responsibility of the commodity owner, producer, and/or account holder. Minnesota West Ag Services LLC and principals and employees assume no liability for any use of any information contained herein. Reproduction without authorization is forbidden.



WEEKLY COMMENTS

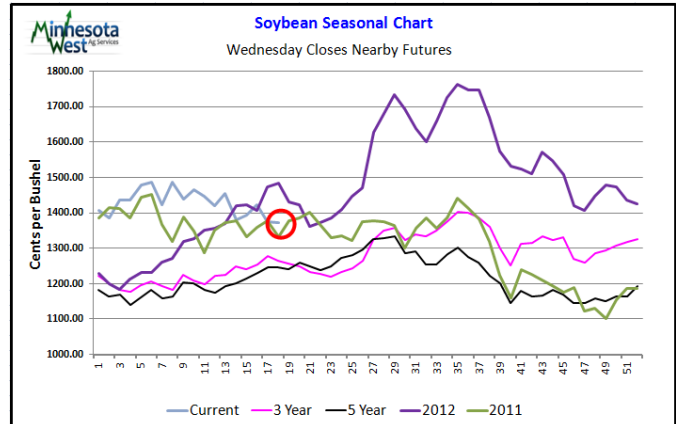
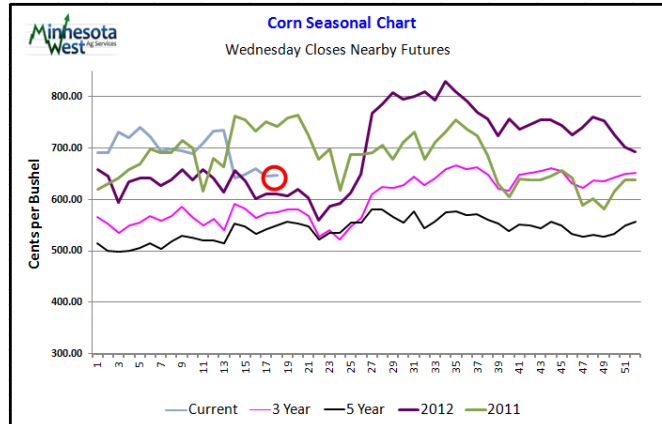
david@mnwestag.com

Office 1-877-365-3744

www.mnwestag.com

Friday May 12, 2013

Seasonal Charts



Outside Markets:

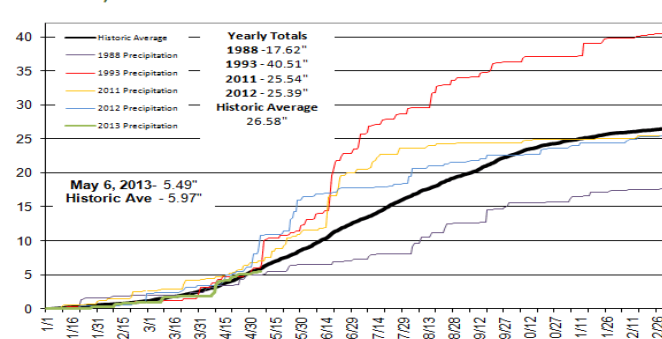
U.S. Dollar Index	83.300	+0.069	+0.08%
CCI Index	534.17s	0.00	-
Gold	1431.0	-5.8	-0.4%
Silver	23.710	+0.078	+0.33%
DJIA	15068s	+24	+0.16%
S&P 500 Index	1625.00	-4.60	-0.28%
Nasdaq 100	2970.00	-5.50	-0.18%
Russell 1000 Growth	750.40s	+3.80	+0.51%
MSCI EMI Index	1043.80	-1.80	-0.17%
Nikkei 225	14785.00	-20.00	-0.14%
Brazilian Real	0.49180s	-0.00310	-0.63%
Euro FX	1.29780	-0.00080	-0.06%
Canadian Dollar	0.98660	-0.00140	-0.14%
Japanese Yen	0.98330	-0.00170	-0.17%
Australian Dollar	0.99700	-0.00140	-0.14%
Chinese Renminbi	0.162320s	+0.000400	+0.25%
Mexican Peso	0.082300	+0.000050	+0.06%
1-Month Libor	99.8025s	-0.0025	-
T-Bond	144-16	-0-16	-0.34%
3-Month T-Bill	99.2700s	0.0000	-
5-Year T-Note	123-290	-0-7.5	-0.07%
Ethanol Futures	Jun 13	2.606s	-0.021
Gasoline RBOB	Jun 13	2.8409	-0.0194
RME Biodiesel	May 13	1119.951s	-9.194
Heating Oil	Jun 13	2.8895	-0.0167
Natural Gas	Jun 13	3.890	-0.020
Crude Oil Brent	Jun 13	103.91s	-0.56
Coal Futures	Jun 13	59.85s	-0.20
Uranium	May 13	40.50s	0.00

Soil Temperatures - U of M Southwest Research and Outreach Center - Lamberton, MN

	Monday, May 6	Tuesday, May 7	Wednesday, May 8	Thursday, May 9	Friday, May 10
Air Temperature	Max = 51; Min = 38	Max = 70; Min = 42	Max = 77; Min = 43	Max = 58; Min = 54	Max = 60; Min = 36
Soil Temperature					
2 inch	Max = 52; Min = 43; Ave = 47	Max = 67; Min = 46; Ave = 57	Max = 73; Min = 47; Ave = 60	Max = 60; Min = 57; Ave = 58	Max = 60; Min = 44; Ave = 52
4 inch	Max = 49; Min = 41; Ave = 51	Max = 62; Min = 44; Ave = 53	Max = 67; Min = 47; Ave = 57	Max = 57; Min = 54; Ave = 55	Max = 57; Min = 46; Ave = 51
8 inch	Max = 45; Min = 39; Ave = 48	Max = 54; Min = 42; Ave = 48	Max = 58; Min = 46; Ave = 52	Max = 53; Min = 51; Ave = 52	Max = 53; Min = 46; Ave = 50
Daily Precipitation	0.07"	0.00"	0.00"	1.51"	0.06"

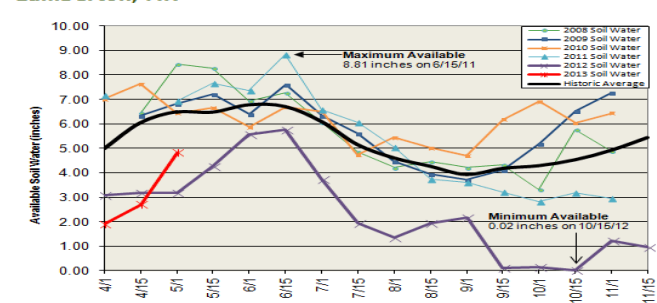
The weather center reporting is delayed 24 hours, so the date listed is the reporting date. Example: The information listed as Friday May 3, is actually the information for Thursday May 2

1988, 1993, 2011-2013 Yearly Precipitation Totals vs. Historic Average Southwest Research and Outreach Center Lamberton, MN



2008-2012 Soil Water vs. Historic Average

Historic Average (1966 - 2011) Southwest Research & Outreach Center Lamberton, MN



(an equal opportunity provider) The information contained herein was obtained from sources believed to be reliable, but can not be guaranteed. All examples given are strictly hypothetical and neither the information, nor any opinion expressed, constitutes a solicitation to market commodities or buy or sell futures or options on futures. Commodity marketing and trading is risky. Trading and/or marketing decisions and any trading and/or marketing gains or losses are the responsibility of the commodity owner, producer, and/or account holder. Minnesota West Ag Services LLC and principals and employees assume no liability for any use of any information contained herein. Reproduction without authorization is forbidden.

U.S. Drought Monitor

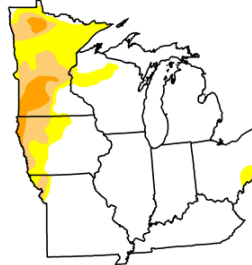
May 7, 2013
Valid 7 a.m. EST

Midwest

Drought Conditions (Percent Area)							
	None	D0	D1	D2	D3	D4	
Current	77.96	22.04	10.38	2.99	0.01	0.00	
Last Week (04/30/2013 map)	74.12	25.88	14.05	3.28	0.04	0.00	
3 Months Ago (02/05/2013 map)	40.20	59.80	47.55	26.48	7.89	0.14	
Start of Calendar Year (01/01/2013 map)	28.14	71.86	54.93	30.11	7.88	0.14	
Start of Water Year (09/01/2012 map)	8.75	91.25	67.48	41.58	14.88	0.28	
One Year Ago (05/01/2012 map)	56.78	43.22	16.58	5.35	0.00	0.00	

Intensity:

D0 Abnormally Dry
D1 Drought - Moderate
D2 Drought - Severe
D3 Drought - Extreme
D4 Drought - Exceptional



The Drought Monitor focuses on broad-scale conditions. Local conditions may vary. See accompanying text summary for forecast statements.

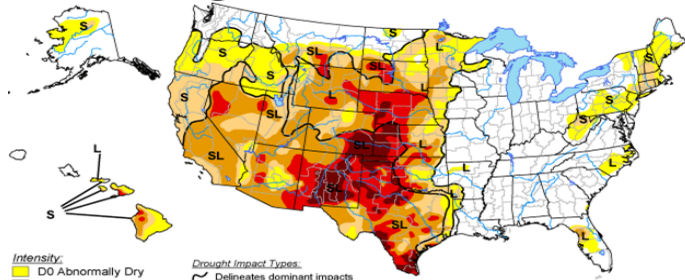


Released Thursday, May 9, 2013
National Drought Mitigation Center.

<http://droughtmonitor.unl.edu>

U.S. Drought Monitor

May 7, 2013
Valid 7 a.m. EDT



Intensity:

D0 Abnormally Dry
D1 Drought - Moderate
D2 Drought - Severe
D3 Drought - Extreme
D4 Drought - Exceptional

Drought Impact Types:

S = Short-Term, typically <6 months (e.g. agriculture, grasslands)
L = Long-Term, typically >6 months (e.g. hydrology, ecology)

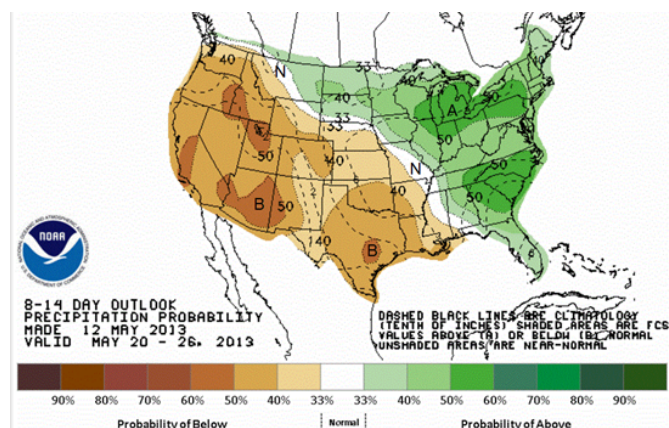
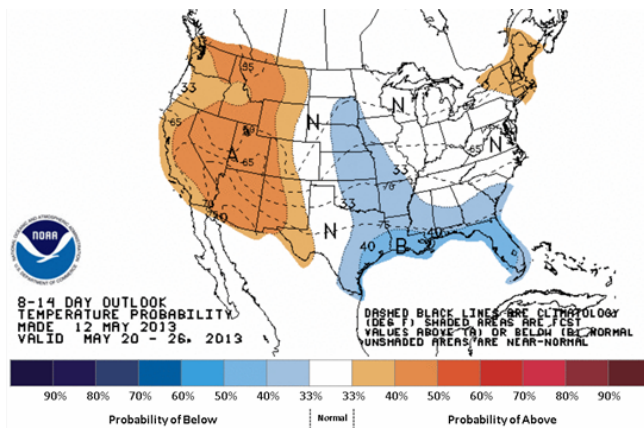
The Drought Monitor focuses on broad-scale conditions. Local conditions may vary. See accompanying text summary for forecast statements.



Released Thursday, May 9, 2013
Author: David Miskus, NOAA/NWS/NCEP/CPC

<http://droughtmonitor.unl.edu/>

8 to 14 days Outlook



US Dollar Index

DXY00 - U.S. Dollar Index - Daily OHLC Chart



CRB CCI Index

CIY00 - CRB CCI Index - Daily OHLC Chart



(an equal opportunity provider) The information contained herein was obtained from sources believed to be reliable, but can not be guaranteed. All examples given are strictly hypothetical and neither the information, nor any opinion expressed, constitutes a solicitation to market commodities or buy or sell futures or options on futures. Commodity marketing and trading is risky. Trading and/or marketing decisions and any trading and/or marketing gains or losses are the responsibility of the commodity owner, producer, and/or account holder. Minnesota West Ag Services LLC and principals and employees assume no liability for any use of any information contained herein. Reproduction without authorization is forbidden.



WEEKLY COMMENTS

david@mnwestag.com

Office 1-877-365-3744

www.mnwestag.com

Friday May 12, 2013

Crude Oil Daily

CLZ11 - Crude Oil WTI - Daily OHLC Chart



Gold Weekly

GC - Gold - Weekly OHLC Chart



Natural Gas

NG - Natural Gas - Weekly OHLC Chart



S&P 500 Index

SP - S&P 500 Index - Weekly OHLC Chart



Lean Hogs Daily

HEK13 - Lean Hogs - Daily OHLC Chart



Lean Hogs Weekly

HE - Lean Hogs - Weekly OHLC Chart



(an equal opportunity provider) The information contained herein was obtained from sources believed to be reliable, but can not be guaranteed. All examples given are strictly hypothetical and neither the information, nor any opinion expressed, constitutes a solicitation to market commodities or buy or sell futures or options on futures. Commodity marketing and trading is risky. Trading and/or marketing decisions and any trading and/or marketing gains or losses are the responsibility of the commodity owner, producer, and/or account holder. Minnesota West Ag Services LLC and principals and employees assume no liability for any use of any information contained herein. Reproduction without authorization is forbidden.



WEEKLY COMMENTS

david@mnwestag.com

Office 1-877-365-3744

www.mnwestag.com

Friday May 12, 2013

Live Cattle Daily

LEM13 - Live Cattle - Daily OHLC Chart



Live Cattle Weekly

LE - Live Cattle - Weekly OHLC Chart



Feeder Cattle Daily

GFK13 - Feeder Cattle - Daily OHLC Chart



Feeder Cattle Weekly

GF - Feeder Cattle - Weekly OHLC Chart



Soybean Meal Daily

ZMK13 - Soybean Meal - Daily OHLC Chart



Soybean Meal Weekly

ZM - Soybean Meal - Weekly OHLC Chart



(an equal opportunity provider) The information contained herein was obtained from sources believed to be reliable, but can not be guaranteed. All examples given are strictly hypothetical and neither the information, nor any opinion expressed, constitutes a solicitation to market commodities or buy or sell futures or options on futures. Commodity marketing and trading is risky. Trading and/or marketing decisions and any trading and/or marketing gains or losses are the responsibility of the commodity owner, producer, and/or account holder. Minnesota West Ag Services LLC and principals and employees assume no liability for any use of any information contained herein. Reproduction without authorization is forbidden.



WEEKLY COMMENTS

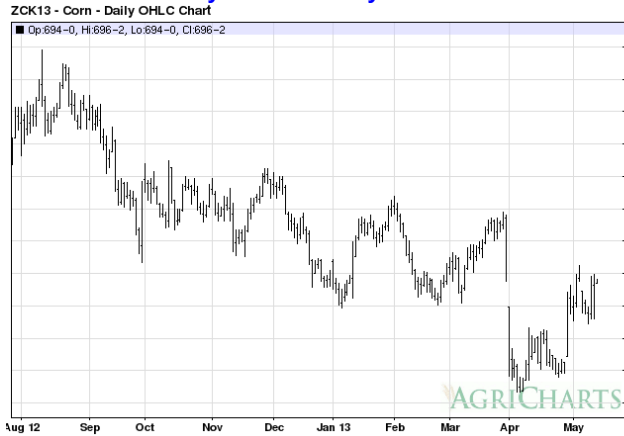
david@mnwestag.com

Office 1-877-365-3744

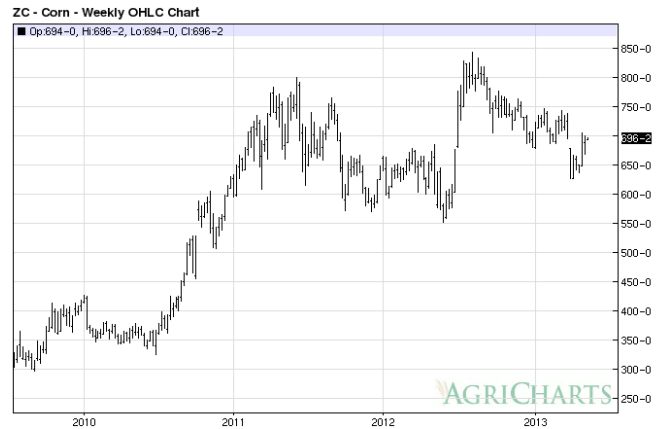
www.mnwestag.com

Friday May 12, 2013

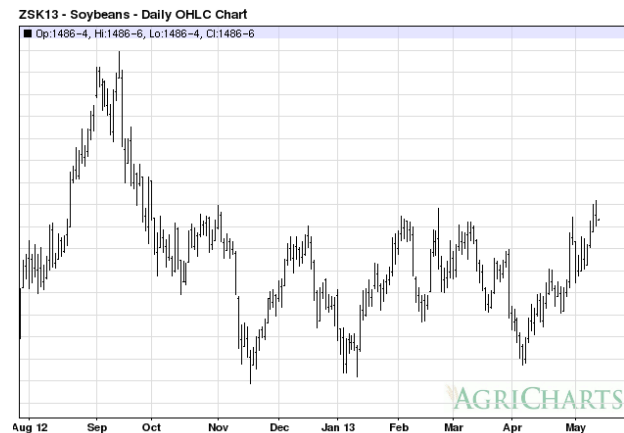
May 13 Corn Daily Chart



Corn Weekly Chart



May 13 Soybean Daily Chart



Soybean Weekly Chart



May 13 Mpls Spring Wheat Daily Chart



Mpls Spring Wheat Weekly Chart



(an equal opportunity provider) The information contained herein was obtained from sources believed to be reliable, but can not be guaranteed. All examples given are strictly hypothetical and neither the information, nor any opinion expressed, constitutes a solicitation to market commodities or buy or sell futures or options on futures. Commodity marketing and trading is risky. Trading and/or marketing decisions and any trading and/or marketing gains or losses are the responsibility of the commodity owner, producer, and/or account holder. Minnesota West Ag Services LLC and principals and employees assume no liability for any use of any information contained herein. Reproduction without authorization is forbidden.



WEEKLY COMMENTS

david@mnwestag.com

Office 1-877-365-3744

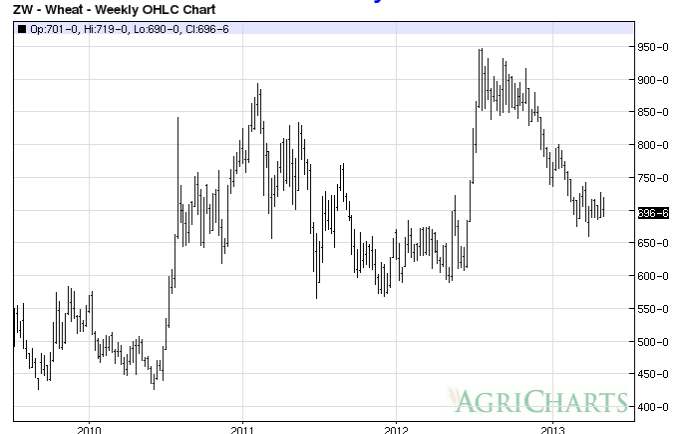
www.mnwestag.com

Friday May 12, 2013

May 13 CBOT Wheat Daily Chart



CBOT Wheat Weekly Chart



May 13 KC Red Wheat Daily Chart



KC Red Wheat Weekly Chart



Minnesota West Ag Services is an equal opportunity provider

This material has been prepared by a sales or trading employee or agent of Allendale Inc. and is, or is in the nature of, a solicitation. This material is not a research report prepared by Allendale's Research Department. By accepting this communication, you agree that you are an experienced user of the futures markets, capable of making independent trading decisions, and agree that you are not, and will not, rely solely on this communication in making trading decisions.

DISTRIBUTION IN SOME JURISDICTIONS MAY BE PROHIBITED OR RESTRICTED BY LAW. PERSONS IN POSSESSION OF THIS COMMUNICATION INDIRECTLY SHOULD INFORM THEMSELVES ABOUT AND OBSERVE ANY SUCH PROHIBITION OR RESTRICTIONS. TO THE EXTENT THAT YOU HAVE RECEIVED THIS COMMUNICATION INDIRECTLY AND SOLICITATIONS ARE PROHIBITED IN YOUR JURISDICTION WITHOUT REGISTRATION, THE MARKET COMMENTARY IN THIS COMMUNICATION SHOULD NOT BE CONSIDERED A SOLICITATION.

The risk of loss in trading futures and/or options is substantial and each investor and/or trader must consider whether this is a suitable investment. Past performance, whether actual or indicated by simulated historical tests of strategies, is not indicative of future results. Trading advice is based on information taken from trades and statistical services and other sources that Allendale Inc. believes are reliable. We do not guarantee that such information is accurate or complete and it should not be relied upon as such. Trading advice reflects our good faith judgment at a specific time and is subject to change without notice. There is no guarantee that the advice we give will result in profitable trades.

Minnesota West Ag. Services, its principals and employees assume no liability for any use of any information contained herein. Reproduction or rebroadcast without authorization is forbidden

(an equal opportunity provider) The information contained herein was obtained from sources believed to be reliable, but can not be guaranteed. All examples given are strictly hypothetical and neither the information, nor any opinion expressed, constitutes a solicitation to market commodities or buy or sell futures or options on futures. Commodity marketing and trading is risky. Trading and/or marketing decisions and any trading and/or marketing gains or losses are the responsibility of the commodity owner, producer, and/or account holder. Minnesota West Ag Services LLC and principals and employees assume no liability for any use of any information contained herein. Reproduction without authorization is forbidden.